

MANUFACTURERS AND SUPPLIERS OF
REFURBISHED BRICKMAKING MACHINERY

LATER DI TONNO A.
MECCANICA

COSTRUZIONE, RIGENERAZIONE E COMMERCIO
MACCHINE PER L'INDUSTRIA DEL LATERIZIO

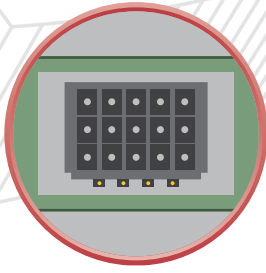
CATALOGO FILIERE



DIES CATALOGUE



*Sixty years of experience
Thirty years of value*



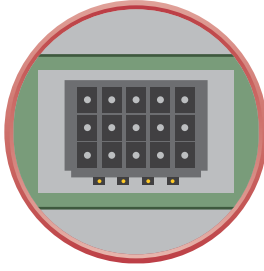
FILIERE

- DIES
- PLAQUES
- BOQUILLAS
- LOCHPLATTEN
- ШТАМПОВЫЕ ПЛИТЫ
- بل اوڤال حءافص
- ىرىگ بل اق ىاه حءافص

FILIERA R

A traditional Die with internal regulation. The die requires a die holder plate in order to mount it on the extruder. Clay flow adjustment requires the removal of the die off the extruder.





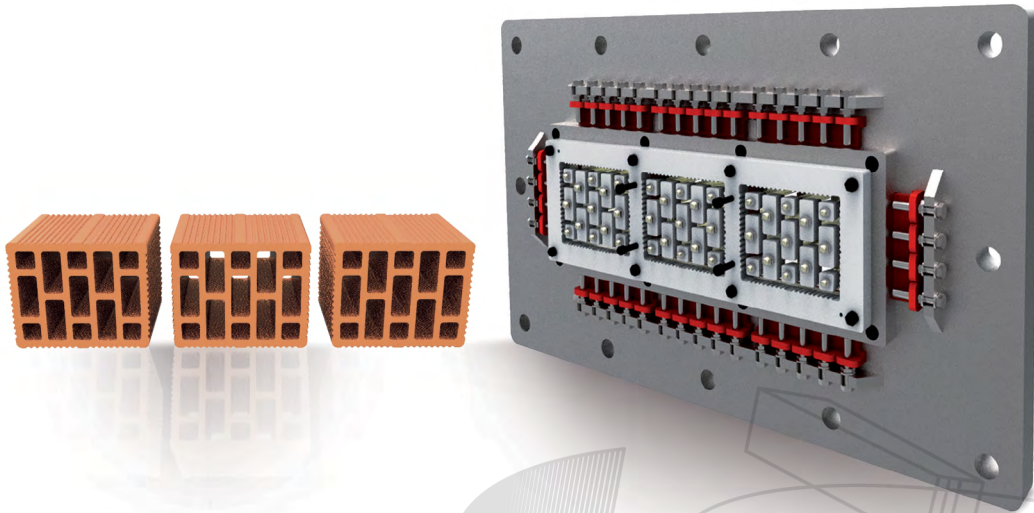
FILIERE

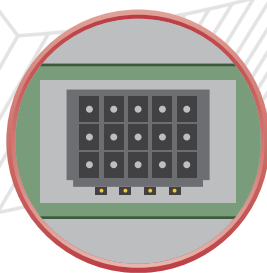
- DIES
- PLAQUES
- BOQUILLAS
- LOCHPLATTEN
- ШТАМПОВЫЕ ПЛИТЫ
- بل او قل ا حئ افص
- یری گ بل اق یاه هج فص



FILIERA R1

The first evolutionary step of the traditional Die: The flange is connected directly to the extruder. Clay flow adjustment is available through an external control system without removal of the die off the extruder.



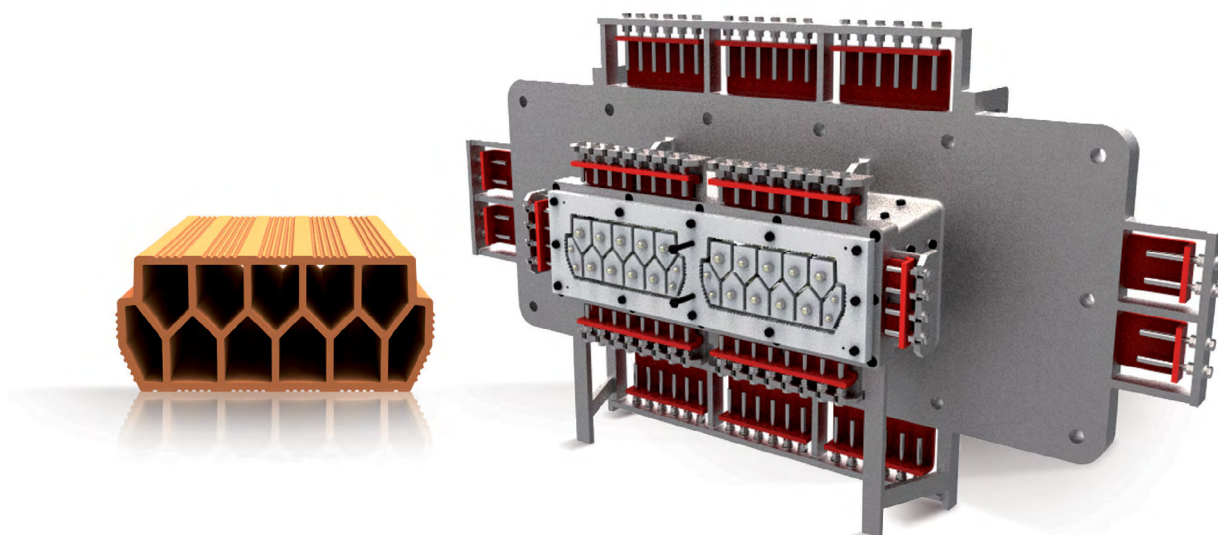


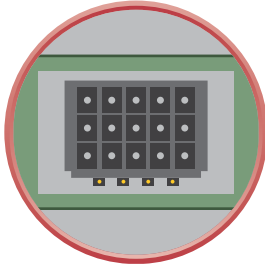
FILIERE

- DIES
- PLAQUES
- BOQUILLAS
- LOCHPLATTEN
- ШТАМПОВЫЕ ПЛИТЫ
- بېل اوځلا حېافص
- یریگ بېلاق یاه هحفص

FILIERA R1+

The second evolutionary step of the traditional Die. In order to improve the mechanical strength of the extruded product of the "ERREUNO" die, a conical mouth hosting the bridge structure is added. It can be equipped, if the dimensions allow it, with a second external regulating system for the clay flow.



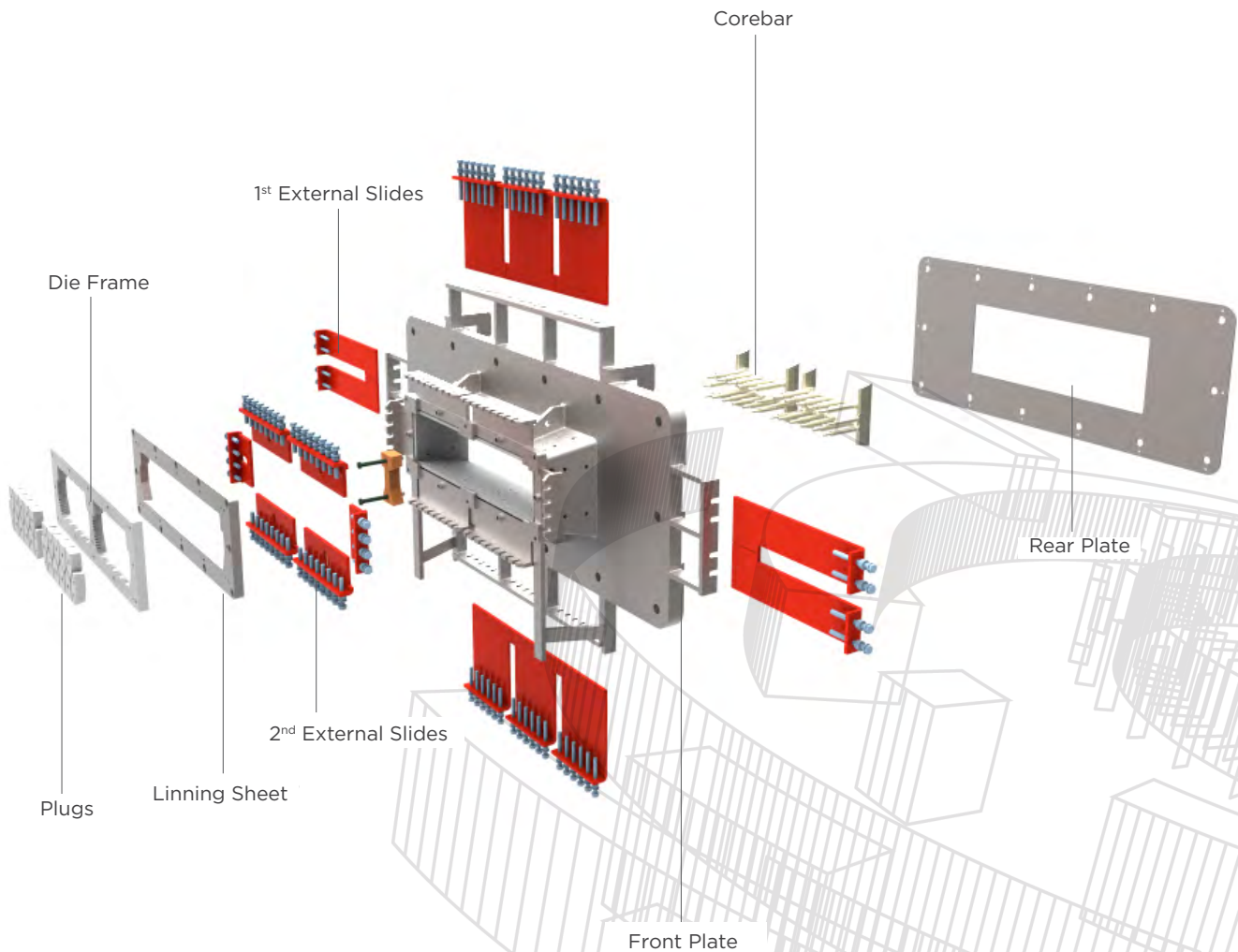


FILIERE

- DIES
- PLAQUES
- BOQUILLAS
- LOCHPLATTEN
- ШТАМПОВЫЕ ПЛИТЫ
- بل او قل ا حى افص
- ىرىگ بل اق ىاه ه ح ف ص



The Later Meccanica dies are designed according to specific customer requirements. Each component is encoded, and any spare part may be ordered without the need of shipping to our headquarters the original die. The elements most likely to suffer from wear such as frames and plugs are made of steel and coated with a hard chromium plating. In order to further increase the durability and dimensional stability they are also available with in special heat-treated steel or with hard metal inserts.



MANUFACTURERS AND SUPPLIERS OF
REFURBISHED BRICKMAKING MACHINERY



COSTRUZIONE, RIGENERAZIONE E COMMERCIO
MACCHINE PER L'INDUSTRIA DEL LATERIZIO

LATER MECCANICA s.r.l.
di Alfredo Di Tonno

C/da Remartello, 21 · 65014 Loreto Aprutino (PE) · Italy
Tel. e Fax: +39.085.8208538 · info@latermeccanica.it